

3961

PLAT NO. I QUAIL RIDGE

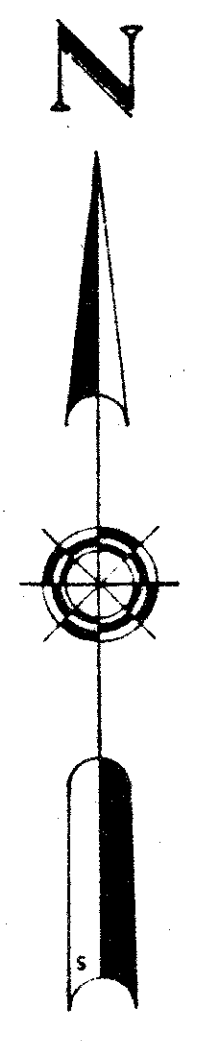
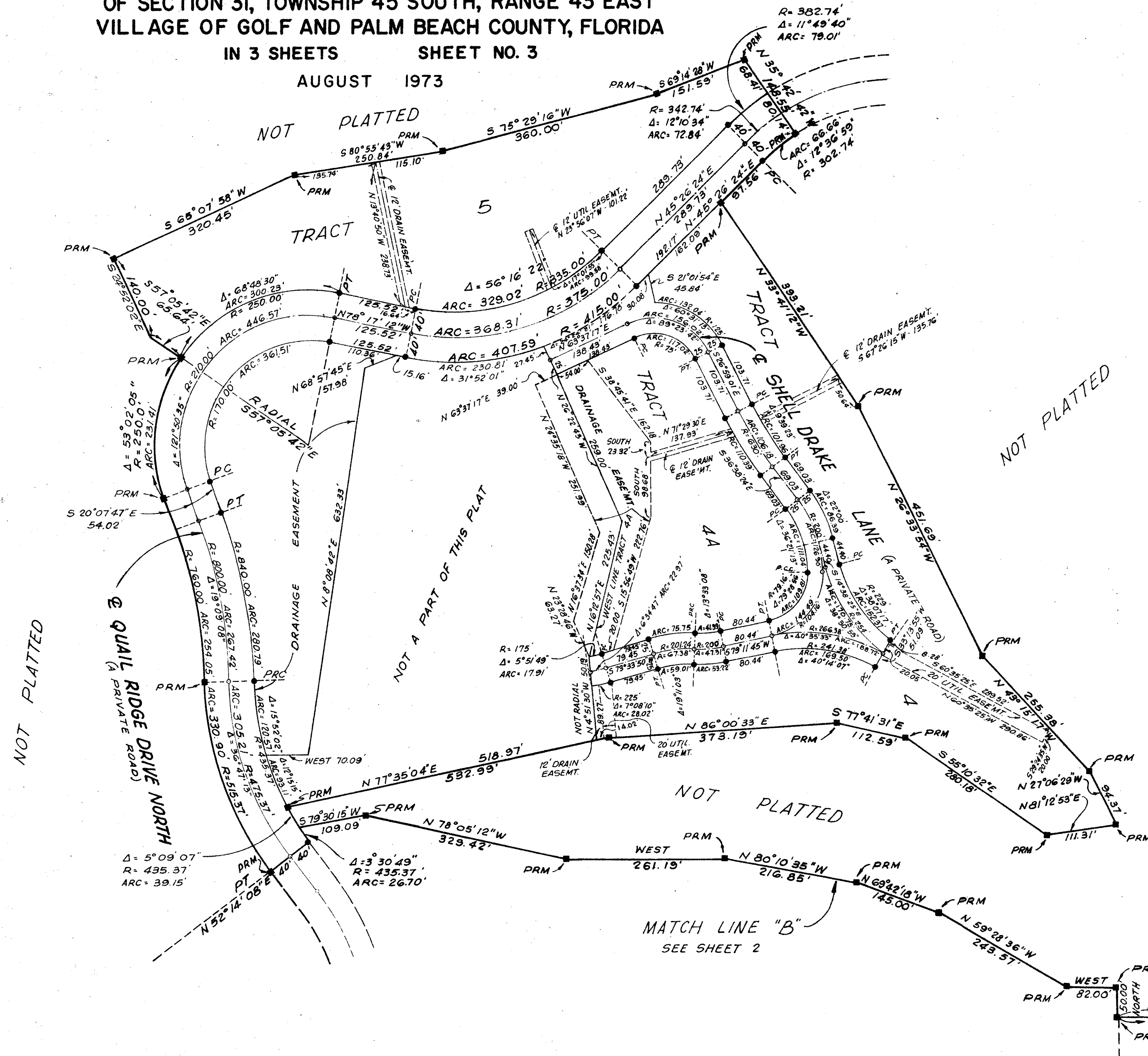
(A PLANNED UNIT DEVELOPMENT)

BEING A SUBDIVISION OF A PORTION OF THE NE 1/4 OF SECTION 36,
TOWNSHIP 45 SOUTH, RANGE 42 EAST, AND A PORTION OF THE NW 1/4
OF SECTION 31, TOWNSHIP 45 SOUTH, RANGE 43 EAST
VILLAGE OF GOLF AND PALM BEACH COUNTY, FLORIDA

IN 3 SHEETS SHEET NO. 3

AUGUST 1973

N 89° 41' 39" E 36.31 N 88° 26' 03" E 2665.07



100 0 100
SCALE IN FEET

NORTH 1956.85
RANGE 42 EAST
RANGE 43 EAST

- PRM = PERMANENT REFERENCE MONUMENT
- PCP = PERMANENT CONTROL POINT

1000-193

DATE OF PRINT
NOV 15 1979

THIS INSTRUMENT WAS PREPARED BY
S. V. HOWARD
MOCK, ROOS & SEARCY, INC.
CONSULTING ENGINEERS
2930 OKEECHOBEE BOULEVARD
WEST PALM BEACH, FLORIDA 33411